

FOR OFFICE USE ONLY

# NEUROSURGERY

HOSPITAL PRIVILEGES ●●●●●

—TREATS THIS SPECIALTY AREA

TO REFER YOUR PATIENT:

Call Physician Partner Concierge Services at **305-243-UMMD (8663)** or submit a referral online at [ummd.org](http://ummd.org).

SURGICAL

PHYSICIANS	CLINIC LOCATION	Spine	Cranial	Endovascular	Vascular	Functional	radiosurgery	Pediatric	Trauma Cranial	Peripheral Nerve	Epilepsy
Ronald J. Benveniste, M.D. ●●●●●	C V	■				■					
Ian Côté, M.D. ●●●●●	U J M	■							■		
Barth A. Green, M.D. ●●●●●	C	■									
Roberto C. Heros, M.D. ●●●●●	C		■		■						
Michael E. Ivan, M.D. ●●●●●	U M		■			■					
Jonathan R. Jagid, M.D. ●●●●●	U C	■				■		■		■	
Ricardo J. Komotar, M.D. ●●●●●	U		■								
Howard J. Landy, M.D. ●●●●●	C					■					
Howard B. Levene, M.D. ●●●●●	C V	■									
Allan D. Levi, M.D. ●●●●●	U C	■							■		
Glen R. Manzano, M.D. ●●●●●	U G P B	■									
Heather J. McCrea, M.D. ●●●●●	N H						■				
Jacques J. Morcos, M.D. ●●●●●	C		■		■	■					
Eric C. Peterson, M.D. ●●●●●	U B J		■	■		■		■			
Robert M. Starke, M.D. ●●●●●	U J		■	■		■					
Roland Torres, M.D. ●●●●●	C M	■	■					■			
Steven Vanni, DO,DC ●●●●●	U C	■									
Michael Y. Wang, M.D. ●●●●●	U	■									

LOCATION
● U <b>UHealth Tower</b> 1321 NW 14th St, Suite 306 Miami, FL 33136
● C <b>Sylvester Comprehensive Cancer Center</b> 1475 NW 12th Ave, Miami, FL 33136
● P <b>UHealth Plantation</b> 8100 SW 10th St, Plantation, FL 33324
● B <b>UHealth Boca</b> 3848 FAU Boulevard, Suite 305 Boca Raton, FL 33431
● G <b>UHealth Palm Beach Gardens</b> 3401 PGA Boulevard, Suite 400 Palm Beach Gardens, FL 33410
● K <b>UHealth Kendall</b> 8932 SW 97th Ave, Miami, FL 33176
● J <b>Jackson Memorial Hospital</b> 1611 NW 12th Ave, Miami, FL 33136
● M <b>Jackson South Community Hospital</b> 9333 SW 152nd St, Miami, FL 33157
● V <b>Veterans Affairs Hospital</b> 1201 NW 16th St Miami, FL 33125
● H <b>Holtz Children's Hospital</b> 1611 NW 12th Ave Miami, FL 33136
● L <b>The Lennar Foundation Medical Center</b> 5555 Ponce De Leon Blvd Coral Gables, FL 33146
● N <b>Nicklaus Children's Hospital</b> 3100 SW 62nd Ave Miami, FL 33155
● D <b>UHealth Deerfield</b> 1192 E Newport Center Dr Suite 100 Deerfield Beach, FL 33442

## ADVANCED PRACTICE PROFESSIONAL CLINICS

- |   |  |
|---|--|
| <b>L</b> The Lennar Foundation Medical Center | <b>C</b> Sylvester Comprehensive Cancer Center |
| <b>U</b> UHealth Tower                        | <b>K</b> UHealth Kendall                       |
| <b>D</b> UHealth Deerfield                    | <b>G</b> UHealth Palm Beach Gardens            |
| <b>B</b> UHealth Boca Raton                   |  |



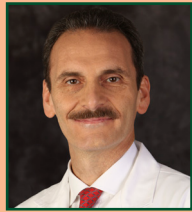
**TO REFER YOUR PATIENT:**

Call Physician Partner Concierge Services at **305-243-UMMD (8663)** or submit a referral online at **ummd.org**.

**SURGICAL**



Allan D. Levi, M.D., Ph.D.  
Chairman  
Cell: 305-546-8962  
Office: 305-243-4572  
ALevi@med.miami.edu



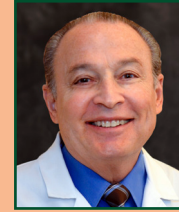
Jacques J. Morcos, M.D.  
Co-Chairman  
Cell: 786-267-0999  
Office: 305-243-4572  
JMorcos@med.miami.edu



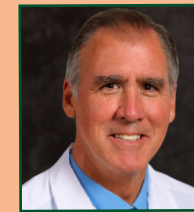
Ronald Benveniste, M.D. Ph.D.  
Cell: 305-799-5311  
Office: 305-575-7059  
RBenveniste@med.miami.edu



Ian Côté, M.D.  
Cell: 954-451-9576  
Office: 305-256-4492  
ICote@med.miami.edu



Barth A. Green, M.D.  
Cell: 786-256-0661  
Office: 305-243-3562  
BAGreen@med.miami.edu



Roberto C. Heros, M.D.  
Cell: 786-232-2377  
Office: 305-243-2088  
RHeros@med.miami.edu



Michael Ivan, M.D.  
Cell: 973-563-4755  
Office: 305-256-4492  
MIvan@med.miami.edu



Jonathan R. Jagid, M.D.  
Cell: 305-205-9871  
Office: 305-243-2359  
JJagid@med.miami.edu



Ricardo J. Komotar, M.D.  
Cell: 917-617-2140  
Office: 305-689-1628  
RKomotar@med.miami.edu



Howard J. Landy, M.D.  
Cell: 305-323-6595  
Office: 305-243-2088  
HLandy@med.miami.edu



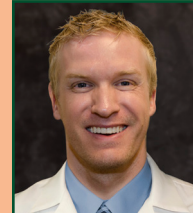
Howard B. Levene, M.D., Ph.D.  
Cell: 856-816-4271  
Office: 305-575-7059  
HLevene@med.miami.edu



Glen Manzano, M.D.  
Cell: 305-586-4544  
Office: 305-689-1628  
GManzano@med.miami.edu



Heather J. McCrea, M.D.  
Cell: 203-247-0056  
Office: 305-585-3627  
HMcCrea@med.miami.edu



Eric C. Peterson, M.D.  
Cell: 206-459-0846  
Office: 305-355-1101  
EricPete@med.miami.edu



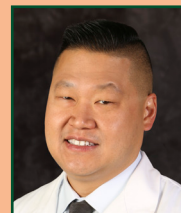
Robert M. Starke, M.D.  
Cell: 917-362-6157  
Office: 305-355-1101  
RStarke@med.miami.edu



Roland Torres, M.D.  
Cell: 408-431-1300  
Office: 305-243-6946  
RTorres@med.miami.edu



Steven Vanni, D.O., D.C.  
Cell: 786-586-2501  
Office: 305-243-2088  
SVanni@med.miami.edu



Michael Y. Wang, M.D.  
Cell: 305-807-5015  
Office: 305-243-2088  
MWang2@med.miami.edu



Dileep R. Yavagal, M.D.  
Neurology  
Cell: 786-348-6808  
Office: 305-355-1103  
DYavagal@med.miami.edu



Gustavo J. Alameda, M.D.  
Neurology  
Cell: 305-613-3380  
Office: 305-575-7059  
GAlameda@med.miami.edu



Alberto A. Martinez-Arizala, M.D.  
Neurology  
Cell: 305-807-7322  
Office: 305-575-7059  
AMartinez@med.miami.edu

**REFERRING PROVIDERS:**

Please note, UHealth physician cellular phone numbers are provided to you to facilitate clinical communications. Please do not distribute to the public.

**Neurology**